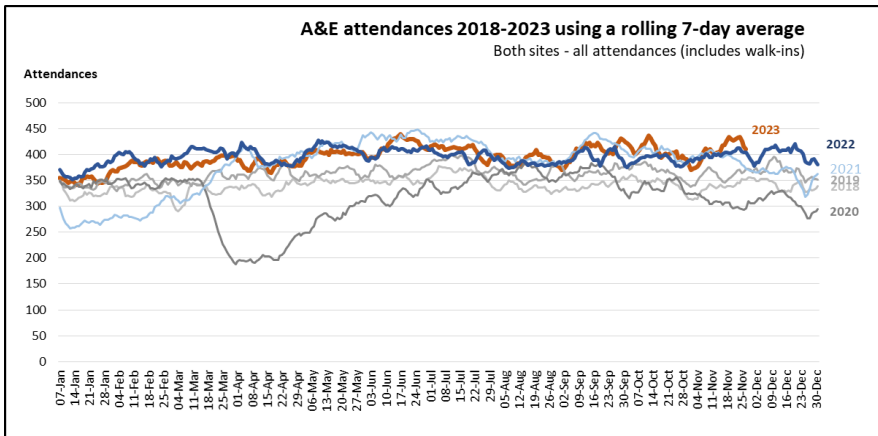
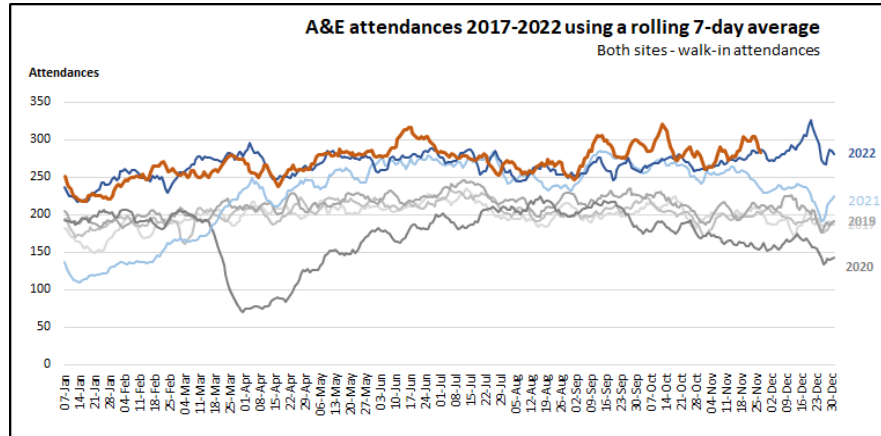


Worcestershire Acute Hospitals NHS Trust Wide Data (Worcestershire Royal Hospital and the Alexandra Hospital)

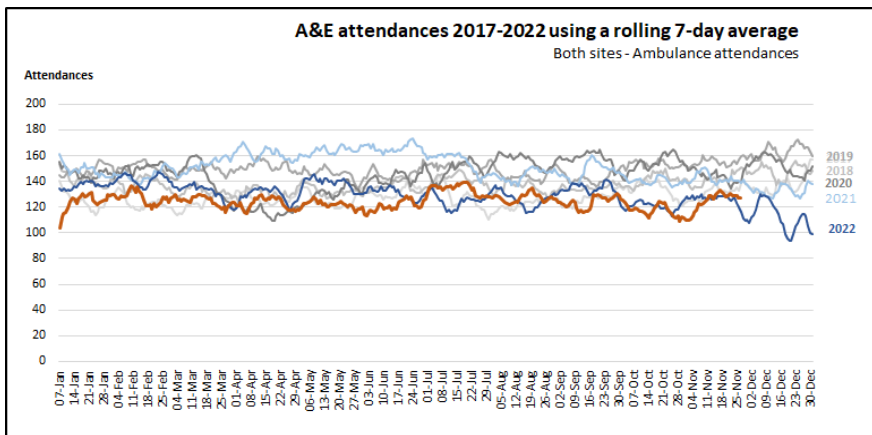
Graph 1 - All attendances



Graph 2 - Walk in attendances



Graph 3 - Ambulance attendances



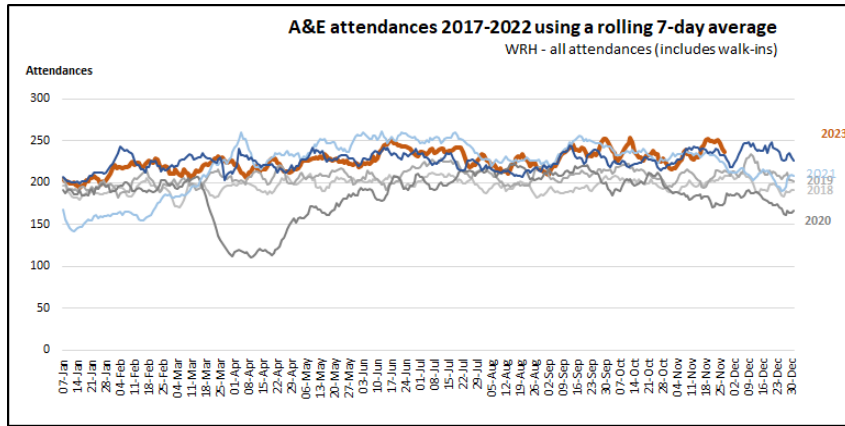
Graph 1 shows rolling average for all attendances across both WRH and The Alex. November has seen a spike and the last 7-10 days has seen the highest numbers over the last 5 years

Graph 2 shows rolling average for walk in attendances across both WRH and The Alex. Walk in attendances have remained high all year and have begun to increase again during November

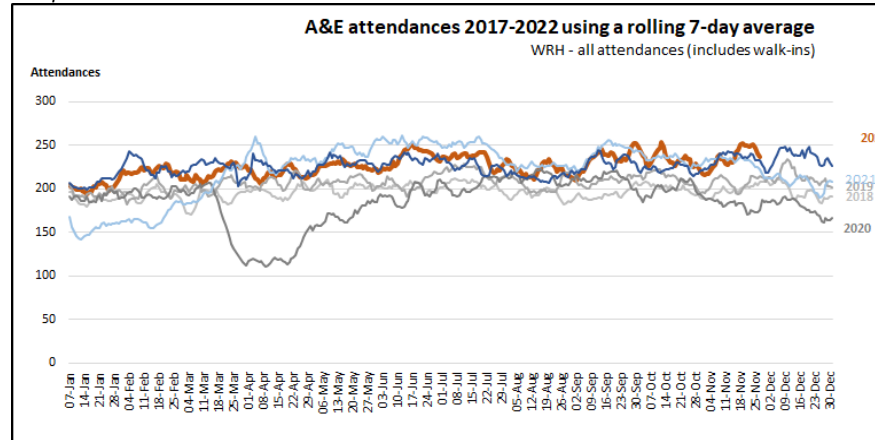
Graph 3 shows rolling average for Ambulance Conveyances across both WRH and The Alex. While for most of the year these have remained lower than other years the last 7-10 days has seen an increase

Worcestershire Royal Hospital (WRH) Graphs

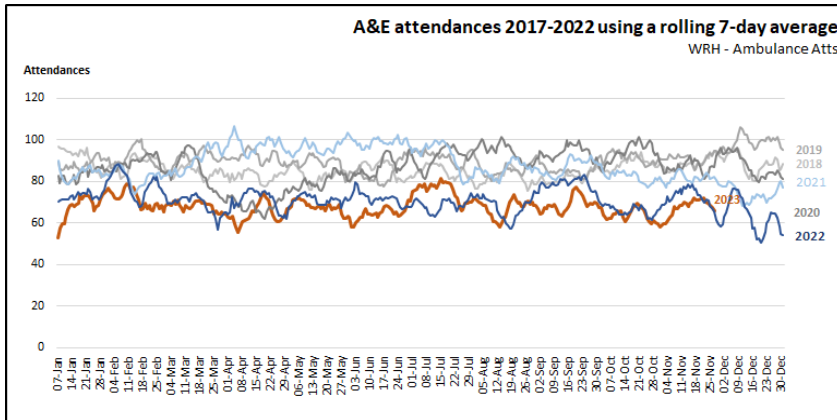
Graph 1 - WRH All attendances



Graph 2 - WRH Walk in attendances



Graph 3 - WRH Ambulance attendances



Graph 1 shows rolling average for all attendances at WRH. November has seen a spike and the last 7-10 days has seen the highest numbers over the last 5 years

Graph 2 shows rolling average for walk in attendances at WRH. Walk in attendances have remained high all year and have begun to increase again during November

Graph 3 shows rolling average for Ambulance Conveyances for WRH. While for most of the year these have remained lower than other years the last 7-10 days has seen an increase

Demand in November 2023

WRH

	All	Walk ins	Ambulance	Paeds	Non Injury	NHS111	GP Referrec	Minor	Major
Nov-21	6,236	4,046	2,190	1,625	4,501	627	615	2,712	3,441
Nov-22	6,354	4,410	1,944	1,735	4,696	642	617	2,608	3,675
Nov-23	6,428	4,582	1,846	1,597	4,791	585	639	2,727	3,640
% Change	+1.16%	+3.90%	-5.04%	-7.95%	+2.02%	-8.88%	+3.57%	+4.56%	-0.95%
Actual Change	+74	+172	-98	-138	+95	-57	+22	+119	-35
Per day	+3	+6	-4	-5	+4	-2	+1	+4	-1

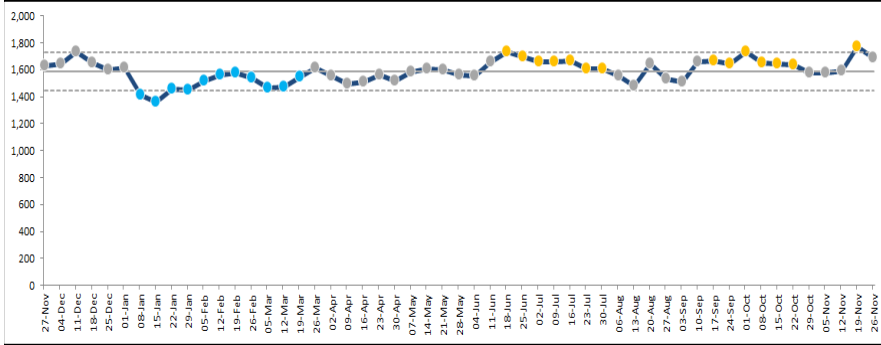
+1.16% increase in attendances compared to last November to date
 +3.9% increase in Walk in attendances to last November
 -5% reduction in Ambulance Conveyances to last November

The Alex

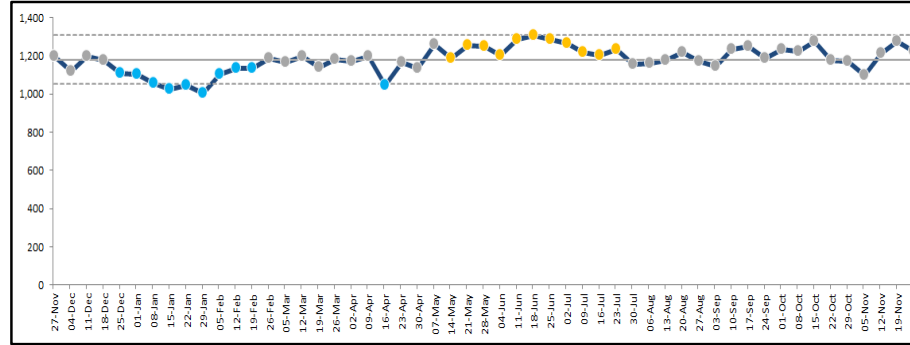
	All	Walk ins	Ambulance	Paeds	Non Injury	NHS111	GP Referrec	Minor	Major
Nov-21	4,368	2,728	1,640	554	3,111	118	139	1,509	2,839
Nov-22	4,415	2,989	1,426	613	3,245	144	261	1,239	3,151
Nov-23	4,674	3,109	1,565	546	3,457	264	348	1,293	3,372
% Change	+5.87%	+4.01%	+9.75%	-10.93%	+6.53%	+83.33%	+33.33%	+4.36%	+7.01%
Actual Change	+259	+120	+139	-67	+212	+120	+87	+54	+221
Per day	+10	+4	+5	-2	+8	+4	+3	+2	+8

+5.87% increase in attendances compared to last November to date
 +4% increase in Walk in attendances to last November
 -9.8% increase in Ambulance Conveyances to last November

Weekly Attendances at WRH



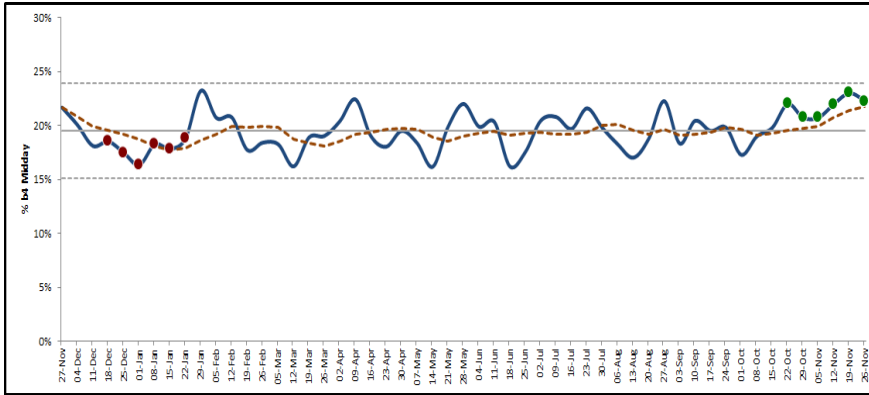
Weekly Attendances at The Alex



Both sites have seen a spike in overall attendances over the past 2 weeks - in particular the w/e 19th November saw some of the highest levels seen across the last 12 month period.

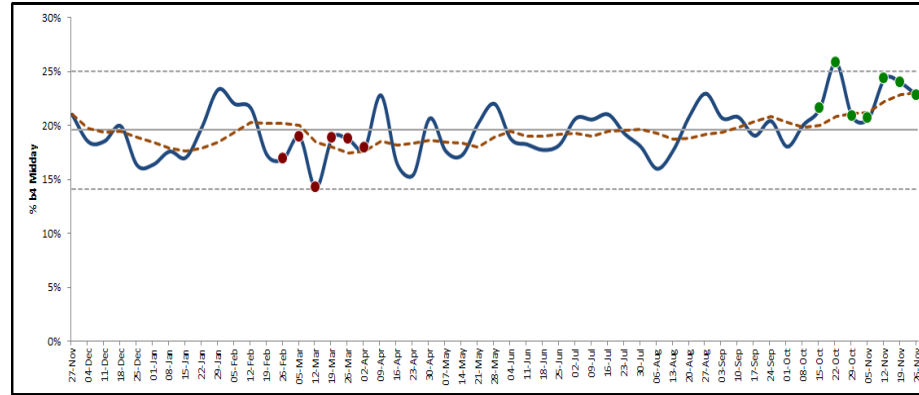
Improved Flow and Discharges

Graph 1: Discharges before Midday (Trust Wide)



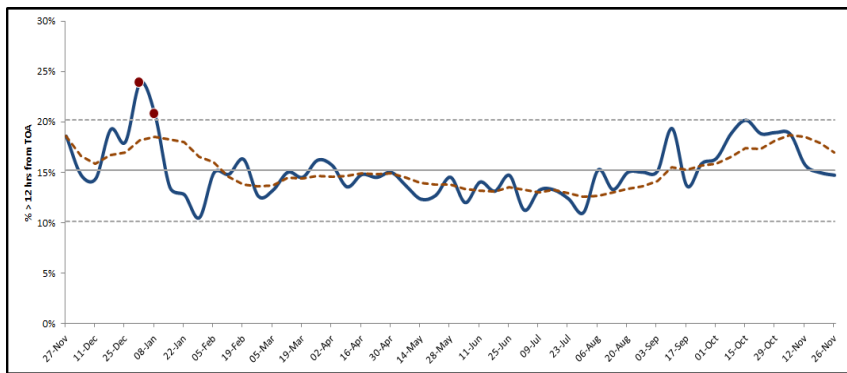
Graph 1 shows the % of discharges made before Midday at Trust Level. Over the past 6-7 weeks there has been a notable shift in increase in the number of discharges made before Midday. The last few weeks have seen these all above 20% when prior to this they % fluctuated and was never consistent

Graph 2: Discharges before Midday (WRH)



Graph 2 shows the % of discharges made before Midday at WRH. Over the past 6-7 weeks there has been a notable shift in increase in the number of discharges made before Midday. The last few weeks have all been above 20% when prior to this the % fluctuated and was never consistent. This perhaps shows the ability to maintain this improvement instead of seeing the odd week.

Graph 3: % of Patients in A&E with a Length of Stay > 12 hours from arrival (Trust Wide)



While the % does still remain high, there has been a reduction in the % of patients with a Length of Stay > 12 hours from time of arrival in A&E, both Trust wide and at WRH. However while this has started to reduce it still remains above, or at least at a similar level to earlier in the year. This does however suggest that time spent in A&E is reducing and small improvements in flow

Graph 4: % of Patients in A&E with a Length of Stay > 12 hours from arrival (WRH)

